

Company Introduction

Scantech is a high-tech enterprise specialized in development, research, and sale of intelligent visual inspection equipment and is one of most professional 3D digital equipment supplier.

R&D team developed series of 3D digital equipment with self-owned intellectual property rights leading home and abroad, such as handheld laser 3D scanner, track 3D scanner and global photogrammetry system and so on. Especially PRINCE with capability of capture extreme detail and AXE series with high volumetric accuracy are global creative initiative, and gain great attention and recognition in the 3D digital field.

Furthermore, R&D team establish joint development center with Norway Metronor which is a well-known optical metrology enterprise in Europe.

All-Round 3D Digital Solution

Scantech 3D measurement system offer professional measurement technology for variety industries.

Rapid Prototyping



Reverse Engineering



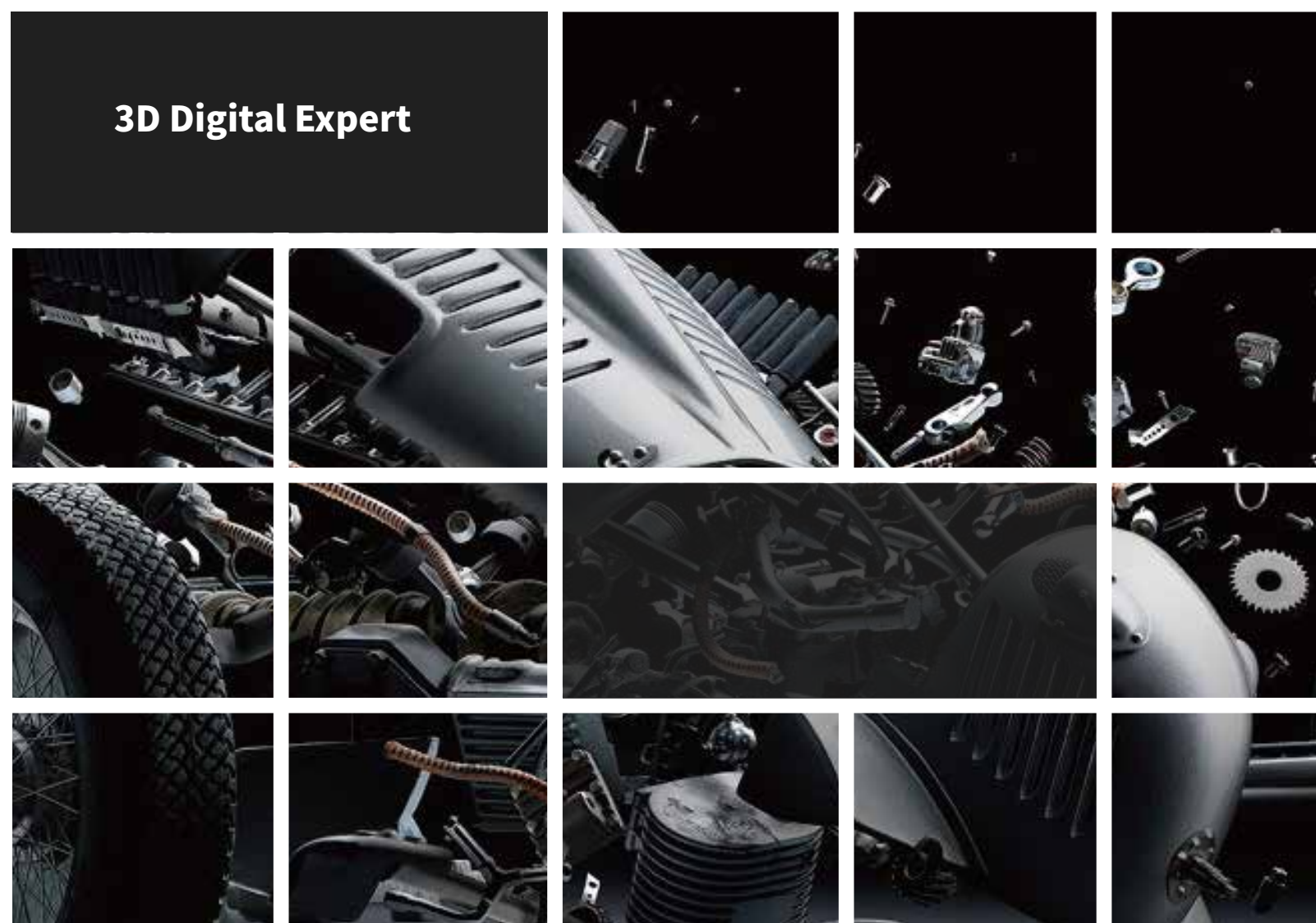
3D Inspection



3D Visualization



3D Digital Expert



HSCAN 3D SCANNER

Metrology Grade 3D Measurement



HangZhou Scantech Co., Ltd

6/F, Building 4, No.998, Wenyi West Road, Yuhang District, Hangzhou, Zhejiang Province, 310012 China
Tel: 0086-571-85852597 Fax: 0086-571-85370381
E-mail: info@sikantech.com
Website: www.sikantech.com

SCANTECH
3D Digitization Expert

Authorized Distributor

HangZhou Scantech Co., Ltd



HSCAN

HSCAN 3D scanner adopts multiple beam laser to obtain 3D point cloud from object surface, confirm the spatial position through reflective marker, then complete 3D point cloud reconstruction.

High Efficiency

- Up to 7 red laser crosses
- Single red laser line scan deep hole
- 480000 measures/s

Self-Position

- No need for extra position device
- Move scanned object freely
- Quality and accuracy of data not affected by changing environment

Real-Time Visualization

- Real-time display & match
- Rapid to obtain difficulty data
- Obvious advantage for complex object

High Precision

- Metrology-grade accuracy up to 0.03mm
- Accuracy is insensitive to unstable environment

Portable& Flexible

- Less than 1kg weight
- Easy to operate with one laptop
- Use in narrow space such as car interior dashboard

HSCAN Technical Parameter			
Type	HSCAN300	HSCAN331	HSCAN771
Weight	0.9kg		
Laser class	CLASS II (eye-safe)		
Laser source	3 parallel laser lines	3 red laser crosses (+1 extra laser line)	7 red laser crosses (+1 Extra laser line)
Scan rate	205000 measures/s	265000 measures/s	480000 measures/s
Scanning area	225mm x 250mm		275mm x 250mm
Resolution	0.05mm		
Accuracy	Up to 0.04mm	Up to 0.03mm	Up to 0.03mm
Volumetric accuracy	0.02mm+0.1mm/m	0.02mm+0.08mm/m	0.02mm+0.06mm/m
Volumetric accuracy (with MSCAN)	0.02mm+0.025mm/m		
Stand-off distance	300mm		
Depth of field	250mm		
Scan the deep hole	—	Support	Support
Output formats	.stl .ply .xyz .dae .fbx .ma .obj .asc		
Temp range	-10°C-40°C		
Interface mode	Gigabit Lan		

